

AC LED Flood Light (HB series)



01 Features



- Direct AC LED Module
- No SMPS
- High efficiency (Typ. 120 lm/W)
- Waterproof type
- Weight lightening
- Easy to install
- Save Electricity bill due to long life
- Power Factor $\geq 98\%$
- Installation type (Wall, Pipe, Chain)

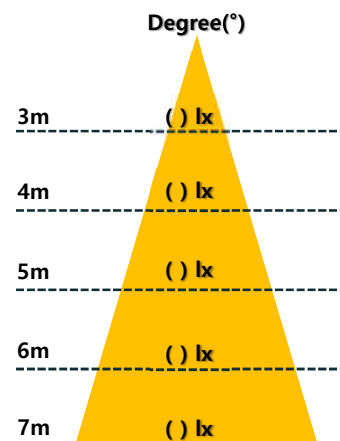
02 Product specifications

| | | |
|---------------------|---------------|-------------------|
| Model | HB-100R | HB-100S |
| Power consumption | 100 W | 100 W |
| Input voltage | 220 Vac | |
| Light Efficiency | Typ. 115 lm/W | Typ. 120 lm/W |
| CRI | Ra 80 | |
| CCT | 5,700 K | |
| Weight | 1.8 kg | 1.8 kg |
| IP code | 66 | |
| SPD | N/A | |
| Beam Angle | 120° | 140° |
| Size (L x W x H mm) | Ø365 x 248 | 225 x 225 x 193.5 |
| Certification | 고효율, KC | 고효율, KC |

03 Illuminance Cone Diagram

Unit : lx

| | | Distance | | | | |
|---------|------|----------|-----|-----|----|----|
| Model | Deg. | 3m | 4m | 5m | 6m | 7m |
| HB-100R | 120° | 394 | 222 | 142 | 99 | 73 |
| HB-100S | 140° | 235 | 133 | 85 | 59 | 44 |



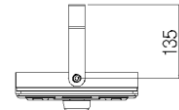
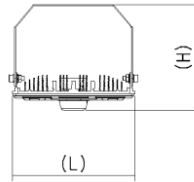
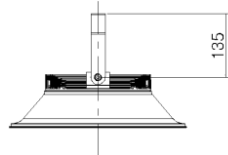
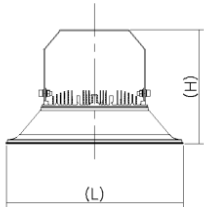
04 Dimension



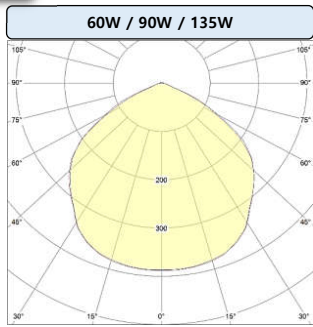
R TYPE



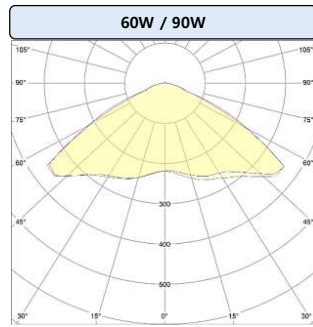
S TYPE



05 Light distribution curve



[120°]



[140°]

06 Reference



Factory, Siheung-si



Korea Mold Center



Factory, Siheung-si



Factory, Mexico



Factory, Mexico



Factory, Mexico



VIoT Technology Joint Stock Company

33 Hoang Dieu St., Ward 10, Phu Nhuan District, Ho Chi Minh City, Viet Nam

Tel: +84 93333 27 27

sales@viotgroup.com | www.viotgroup.com
